

www.jimilab.com



JIMI ELECTRONIC CO.,LTD

Add: No.1005, B3 building, Kexing Science Park, Keyuan North Rd,
Nanshan District, Shenzhen, China
Web: <http://www.jimilab.com>
Email: info@jimilab.com
Tel: +86-755 6664-2520



GPS tracker

Don't lose track of anything/anyone you love





JM01 GPS Vehicle Tracker CE 0700

Waterproof GPS tracker that is suitable for all types of vehicles

- 📍 GPS + AGPS positioning
- 📍 IP65 dust and waterproof
- 📍 Remote cut-off (petrol/power)
- 📍 9-90V wide voltage range
- 📍 Vibration and movement alert
- 📍 SOS button (optional)



GSM	850/900/1800/1900 MHz
GPRS	Class 12, TCP/IP
GPS	MTK
GPS channel	66
Tracking sensitivity	-165dBm
Acquisition sensitivity	-148dBm
TTFF (open sky)	Hot start ≤ 1sec Cold start ≤ 32sec
Battery	800mAh/3.7V Li-Polymer battery
Working voltage/current	9-90VDC/7mA (60VDC)
Standby time	160hr standby time; 12hr working time
Dimension	87.0(L)*74.0(W)*18.7(H)mm
Weight	93.5g



JV200 GPS Vehicle Tracker

€ 0700

Small and easy to install GPS tracker designed for basic tracking & monitoring

- 📍 GPS+AGPS positioning
- 📍 Plug & play installation
- 📍 Remote cut-off (petrol/power)
- 📍 Geo-fence
- 📍 Vibration and movement alert
- 📍 ACC detection for real-time car status report



GSM	850/900/1800/1900 MHz
GPRS	Class 12, TCP/IP
GPS	MTK
GPS channel	66
Tracking sensitivity	-165dBm
Acquisition sensitivity	-148dBm
TTF (open sky)	Hot start ≤ 1sec Cold start ≤ 32sec
Battery	400mAh/3.7V Li-Polymer battery
Working voltage/current	9-36VDC/28mA (12VDC) , 15mA (24VDC)
Standby time	106hr standby time; 7hr working time
Dimension	86.6(L)*44.0(W)*13.6(H)mm
Weight	51g



Standby
20
days

JV03 Magnetic GPS Tracker



JV03 Magnetic GPS Tracker CE 0700

Portable GPS tracker with strong magnet and powerful battery, fit for vehicles, persons and assets

- 📍 Powerful magnet for flexible mounting
- 📍 2600/5200mAh battery
- 📍 IP65 dust and waterproof
- 📍 Geo-fence
- 📍 Voice monitor
- 📍 Built-in moving sensor for vibration detection



GSM	850/900/1800/1900 MHz
GPRS	Class 12, TCP/IP
GPS	MTK
Memory	64MB
Tracking sensitivity	-165dBm
Acquisition sensitivity	-148dBm
TTF (open sky)	Hot start ≤ 1 sec Cold start ≤ 32sec
Battery	2600mAh/3.7V Li-Polymer battery
Working voltage/current	3.7V/60mA
Standby time	20 days standby time; 30hr working time
Dimension	91.5(L)*57.0(W)*24.0(H)mm
Weight	100g

V10 Anti-theft Vehicle Tracker

Anti-assembly and anti-decoding tracker, discourages theft and secures vehicle

- 📍 GPS+AGPS fast locating
- 📍 Remotely cut-off fuel/power
- 📍 Remotely car locking
- 📍 Anti-assembly
- 📍 Geo-fence
- 📍 Wireless relay



GSM	850/900/1800/1900 MHz
GPRS	Class 12, TCP/IP
GPS	MT3336
Tracking sensitivity	-165dBm
Acquisition sensitivity	-148dBm
TTF (open sky)	Hot start ≤ 1sec Cold start ≤ 32sec
Battery	400mAh/3.7V Li-Polymer battery
Working voltage/current	9-36VDC/22mA(12VDC), 12mA(24VDC)
Standby time	5 hr standby time
Dimension	88.0(L)x45.0(W)x12.5(H)mm
Weight	58g





CE 0700

Ji03 GPS Personal Tracker

Small and portable GPS tracker with battery for flexible carry-on

- 📍 1200mAh internal battery
- 📍 SOS alarm & family numbers
- 📍 Two-way communications
- 📍 Geo-fence
- 📍 Built-in moving sensor for vibration detection
- 📍 Web-based tracking platform



GSM	850/900/1800/1900 MHz
GPRS	Class 12, TCP/IP
GPS	MTK
Memory	64MB
Tracking sensitivity	-165dBm
Acquisition sensitivity	-148dBm
TTF (open sky)	Hot start ≤ 1 sec Cold start ≤ 32sec
Battery	1200mAh/3.7V Li-Polymer battery
Working voltage/current	3.7V/50mA
Standby time	10 days standby time; 30hr working time
Calling time	5.5 hr
Dimension	73.0(L)*45.0(W)*16.0(H)mm
Weight	54g



Ji06 GPS Kids Phone



Smart and small GPS locator and phone designed to keep your kids in touch

- 📍 Accurate GPS and LBS positioning
- 📍 4 family numbers for speed-dial
- 📍 SOS button for emergency alert
- 📍 Voice monitor
- 📍 Calling controlled on classes
- 📍 Geo-fence



GSM	850/900/1800/1900 MHz
GPRS	Class 12, TCP/IP
Memory	64MB
Location accuracy	< 10 meters
TTF (open sky)	Hot start ≤ 1 sec Cold start ≤ 32sec
Colored monitor	Resolution 128x128 pixels
Keypad	4 family keys, 2 function keys 1 SOS key, 1 power key
Battery	600mAh/3.7V Li-Polymer battery
Working voltage/current	3.7V/80mA
Standby time	120hr (LBS 10 minutes to report)
Calling time	4 hr
Dimension	65.0(L)*44.5(W)*18.0(H)mm
Weight	52g



Ji09 GPS Kids Phone

CE 0700

Slim designed GPS phone to keep your child safe and connected

- Accurate GPS and LBS positioning
- 2.4GHz RFID (13.5MHz Optional)
- SOS button and family numbers
- Calling controlled on classes
- Voice monitor
- Geo-fence



GSM	850/900/1800/1900 MHz
GPRS	Class 12, TCP/IP
Memory	64MB
Tracking sensitivity	-165dBm
Acquisition sensitivity	-148dBm
TTF (open sky)	Hot start ≤ 1sec Cold start ≤ 32sec
Keypad	3 family keys, 1 SOS key, 1 power key
Battery	600mAh/3.7V Li-Polymer battery
Working voltage/current	3.7V/75mA
Standby time	120hr (LBS 10 minutes to report)
Calling time	4 hr
Dimension	98.0(L)*55.0(W)*7.8(H)mm
Weight	49g





Ji08 GPS Senior Phone

Designed to help the elderly stay in safety and engaged with families

- 📍 Accurate GPS and LBS positioning
- 📍 Big font & talking keypad
- 📍 Family numbers & speed dial
- 📍 SOS button & voice monitor
- 📍 FM & electric torch



GSM	850/900/1800/1900 MHz
GPRS	Class 12, TCP/IP
Tracking sensitivity	-165dBm
Acquisition sensitivity	-148dBm
TTFF (open sky)	Hot start ≤ 1 sec Cold start ≤ 32sec
Display	2.41" color screen (resolution 320x240)
Camera	2 megapixels
External storage	Max 4GB
Battery	1250mAh/3.7V Li-Polymer battery
Working voltage/current	3.7V/90mA
Standby time	256hr (LBS 10 minutes to report)
Calling time	8 hr
Dimension	115.5(L)*57.5(W)*12.6(H)mm
Weight	180g

GT06E 3G GPS Tracker

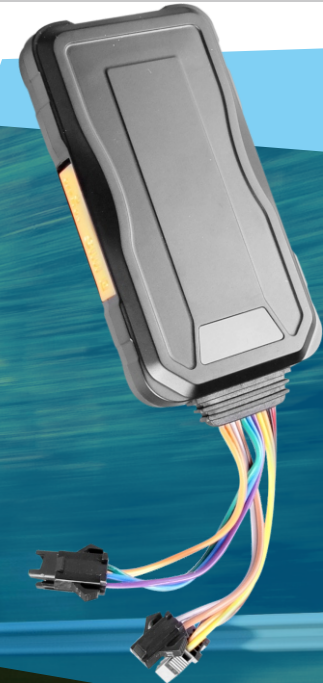
Coming soon

Most technologically advanced GPS tracker compatible with 3G networks

- WCDMA+HSDPA
- Remotely cut off fuel/power
- ACC detection for ignition status report
- Alert for vibration, overspeed, power-off, geo-fence, SOS
- Position uploaded based on time, distance, angle change
- Multiple ways for tracking: SMS, APP, Web platform



Networks	WCDMA(850/2100) MHz GSM 850/900/1800/1900 MHz
Frequency	HSDPA/EDGE/GPRS
GPS	MTK
Tracking sensitivity	-165dBm
Acquisition sensitivity	-148dBm
TTF (open sky)	Hot start ≤ 2sec Cold start ≤ 35sec
Battery	450mAh/3.7V Li-Polymer battery
SOS button	Supported
Voice monitor	Supported
Working voltage	9-36V
Working Temperature	-20°C to 70°C
Dimension	98(L)*52 (W)*15(H)mm
Weight	80g



GT350 GPS Personal Tracker



GT350 GPS Personal Tracker

Coming soon

GPS tracker with long standby time, designed for inspectors, travelers, outworkers, etc.

- 90 days standby time (one position per day)
- GPS+LBS positioning and tracking
- Portable and exquisite design
- SOS and geo-fence
- Internal MIC for two-way communication



GSM	850/900/1800/1900 MHz
GPRS	Class 12, TCP/IP
GPS	MTK
GPS channel	66
Memory	64MB
Tracking sensitivity	-165dBm
Acquisition sensitivity	-148dBm
TTF (open sky)	Hot start ≤ 2sec Cold start ≤ 35sec
Battery	800mAh/3.7V Li-Polymer battery
Voice monitoring range	≤ 5m
TF card	Max. 32GB
Standby time	90 days standby time; 8hr working time
Dimension	67.0(L)*43.0(W)*15.0(H)mm



GT230 Smart OBD Car Tracker

Coming soon

High-end GPS car tracker with international standard OBD II plug, saving your workload on installation

- 📍 GPS + AGPS + LBS tracking
- 📍 OBD II remote diagnosis
- 📍 Built-in acceleration sensor
- 📍 Widely working voltage
- 📍 Built-in monitoring CPU



GSM	850/900/1800/1900 MHz
GPRS	Class 12, TCP/IP
GPS	MTK
GPS channel	66
Memory	64MB
Tracking sensitivity	-165dBm
Acquisition sensitivity	-148dBm
TTF (open sky)	Hot start ≤ 2sec Cold start ≤ 35sec
Working voltage	9-36VDC / 60mA
Battery	400mAh/3.7V Li-Polymer battery
Standby time	60 hr
Dimension	86.6(L)*44.0(W)*13.6(H)mm
Weight	50.5g

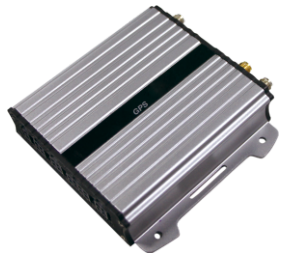


GT820 3G GPS Tracker

Coming soon

Advanced 3G GSM/GPS device, designed for application in high end tracking and telematics

- 📍 WCDMA+HSDPA+WIFI
- 📍 Temperature/fuel sensor
- 📍 RS232/485 for cameras, RFID reader, LCD, etc
- 📍 Remotely cut off petrol and power
- 📍 Analog I/O detection
- 📍 Multiple reports and alarms(fatigue driving, over-speed, geo-fence, route deviation)



Networks	WCDMA(850/2100) MHz GSM 850/900/1800/1900 MHz
GPS	MTK
Channel	66
Tracking sensitivity	-165dBm
Acquisition sensitivity	-148dBm
Wi-Fi	802.11 b/g/n
Battery	450mAh/3.7V Li-Polymer battery
Working voltage/current	12VDC/80mA , 24VDC/42mA
Standby time	2-3 hours
Dimension	79(L)*68.5(W)*21(H)mm
Weight	195g

GT900 GPS Pet Tracker

Coming soon

Specially designed for tracking pets and prevents pets from danger

- 📍 GPS+LBS+WIFI positioning
- 📍 IP65 dust and waterproof
- 📍 Charging base with bluetooth
- 📍 Anti-lost alert (geo-fence)
- 📍 Disassembly alert
- 📍 Low battery and power off alert



GSM	850/900/1800/1900 MHz
GPRS	Class 12, TCP/IP
GPS	MTK
Memory	64MB
Tracking sensitivity	-165dBm
Acquisition sensitivity	-148dBm
TTFF (open sky)	Hot start ≤ 1sec Cold start ≤ 32sec
Battery	400mAh/3.7V (device) 270mAh/3.7V (charging base)
Working voltage/current	3.7VDC/50mA(device) 3.7VDC/1mA(charging base)
Standby time	90 hr standby time; 70 hr working time
Dimension	44.0(L)*43.0(W)*20.0(H)mm
Weight	38g

