

JC900 USER MANUAL

V1.0

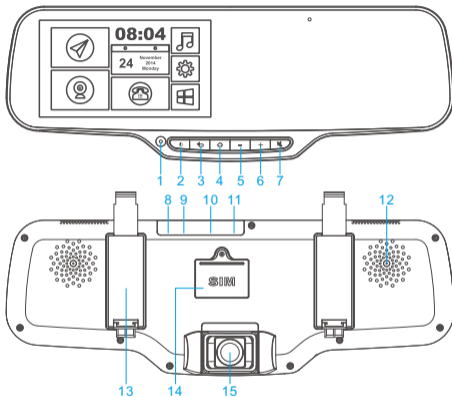
Before use

- 1.This device should be connected with a 5-volt general charger or a 12-volt vehicle power system (must be grounded). Do not install the unit directly on a 24-volt battery in the truck or bus.
- 2.Do not install the unit onto position that would block the vision or operation of the drivers.
- 3.For safe driving, the driver must not watch TV program or operate the unit while driving.
- 4.Do not replace the power fuse without professional guidance.
- 5.Please avoid strong impact as the device consists of high-precision components. Do not disassemble or adjust any inner part. If you have any questions, please turn off the device and notify your local vendors.
- 6.Do not scratch the mirror with sharp materials.
- 7.Do not use anything that contains alcohol or corrosive dilution to clear the screen.
- 8.Prevent the device from places that is too hot or too cold.
Operating temperature: 0°C ~ 50°C.
- 9.Do not expose the unit to moisture, dust, vapors, fumes, direct sunlight or related environment.

Note

- 1.When installed Third party APK, the App might not work well due to compatibility difference, which might even cause constant reboot. It's not a functional error of the device.
- 2.Turn off the device before removing the TF card.

Interface



- 1.Inward camera 2.Power 3.Back 4.Home 5.Volume- 6.Volume+
- 7.Mute 8.Power interface 9.AV interface 10.USB interface 11.TF card slot
- 12.Speaker 13.Strap base 14.SIM card slot 15.Front camera

Specification

CPU	Quad-core MT6582
OS	Android 4.4
LCD screen	5.0" Capacitive Multi-point touch screen QHD 960*540 resolution Auto-adjusting Brightness: 280-340 cd/m ²
Tri-Camera	Front-facing camera For video recording Rotatable Full HD 1080P camera Adjustable viewing angle: FOV (D) 150°
	Driver-facing camera For in-car Live tracking service 0.3 mega pixel, resolution 640*480 viewing angle 61.6°
	Reversing camera External CVBS camera
GPS	GPS Navigation Google/Waze/Navitel/IGO Map etc.
	GPS Tracking Built-in GPS antenna Free GPS Tracking Service with Platform and App

DVR	Full HD 1080P, 30fps	
3G	GSM 850/900/1800/1900 WCDMA850/1900/2100	
Bluetooth	Bluetooth Hands-free Phone	IOS & Android phone supported
	Bluetooth for data transferring	Android phone supported
Memory	RAM	1GB
	Flash memory	EMMC 8GB
	TF Card memory	Max 32GB
Speaker	3040 BOX	
Battery	1000mAh	
Voltage	DC 12V-24V	

Basics

1. ON/OFF

1) External 12V supply

Press and hold power button to turn on device; same operation to turn off device.

When power supplied by cigarette lighter, device would boot up automatically when engine turned on.

Note:

When connected to external power, it's not allowed to power off the device. Manually to power off the device would cause reboot automatically.

2) Internal power supply

Turn on: Press and hold for 3 seconds to turn on.

Turn off: Press and hold for 2 seconds to turn off.

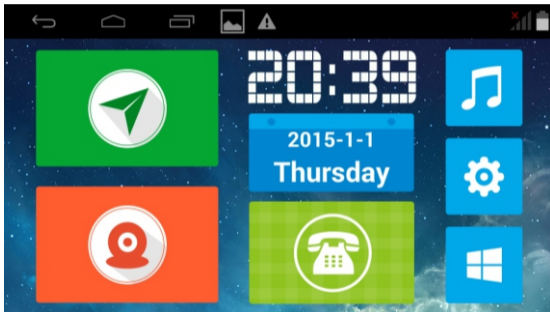
2. SIM Card installation

Unbolt the SIM cover on the backside of the device by screwdriver. Insert the SIM card followed the indicated direction.

Note:

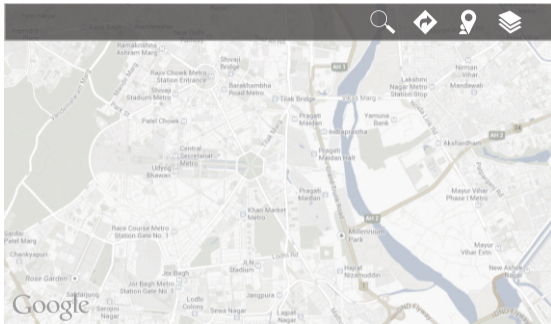
Make sure the power is off before removing the SIM card.


Home page



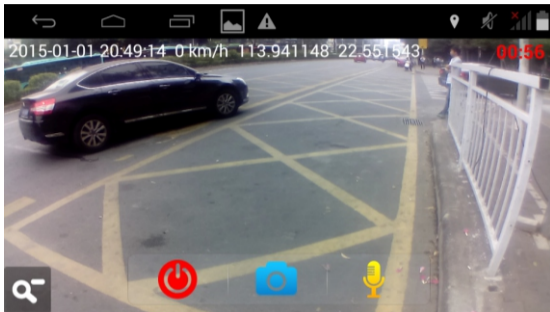
The system provides GPS navigation, DVR, Bluetooth, media player, Android App store. Tap  button to return to main screen,  button to return to last screen.

Navigation



1. Tap  to enter Google Map for navigation.
2. 3G/GSM network or Wifi should be available to activate the Google map.
3. When there is no SIM card, offline navigation could be set as preference with offline map downloaded.

DVR




1. DVR ON&OFF

When powered by cigarette lighter, DVR would operate as the device turns on.

When power is disconnected and no vibration is detected in the following 4 minutes, DVR would stop working.

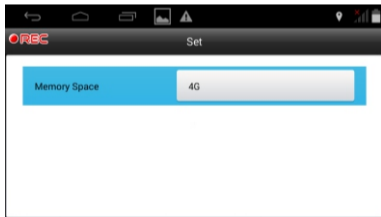
2. Operation

Tap  to enter DVR full screen, on which you could do setting as resolution, video record, photograph, size down the window, mute record etc.

3. Storage

When TF card is inserted the system would store the video in TF card that has available space. You could set the memory space within the maximum TF card storage.

When there is no TF card, the system would store the video in the internal storage that has available space.

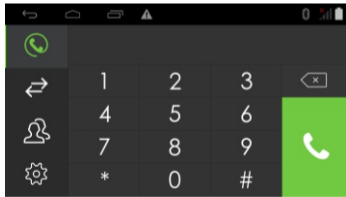
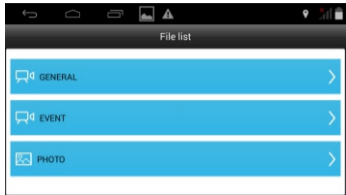


The default resolution of recorded video is 1080P. Each record period is 3 minutes. Video is stored in the file "General". Early record would be replaced when space is full.

When accident like emergency brake or crash happens, DVR would record for 15 seconds more and store this video in the file "Event"

Bluebooth calling

The function asks for bluetooth pairing with mobile phone first. After pairing, you can dial or answer mobile phone through the device's Bluetooth hand free calling.




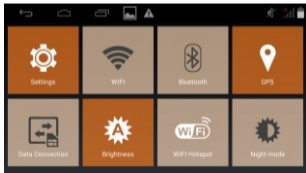
GPS tracking

1. Insert SIM card access to GPRS, after connection the device will send GPS data to platform.
2. Tracking function is on under default setting. First fix will take around 2-5 minutes.
3. Place the device in open air for accurate positioning.
4. Please contact your local vendor for the tracking platform address.



System setting

Tap  to enter setting page where you can set brightness, WIFI switch, navigation, etc.



Wire diagram

